

Lookbook

Turnkey stands



For your inspiration!

Lookbook

Turnkey

Our turnkey stands are built according to the **Better Stands** principles and based on a modular stand system. This makes them a **more sustainable and cost-efficient alternative** to fully custom-built stands.

By using **reusable aluminium structures and rental-based components**, stand elements are reused across multiple exhibitions. Only the graphics are produced per event and recycled after use, significantly reducing waste and unnecessary production.

As a result, turnkey stands offer a **lower environmental footprint**, faster realization and a strong, consistent brand presence on the exhibition floor, all within clearly defined budgets.



We're happy to help

Let's create something unforgettable

Looking for a custom exhibition stand or curious about the possibilities?
We'd love to think along with you and turn your ideas into a standout experience.



Dylan van Beek
Account manager
+31-6-222 31 567
dylan.van.beek@gielissen.nl



Daphne Kraaijvanger
Accountmanager
+31-6-229 007 45
daphne.kraaijvanger@gielissen.nl

Gielissen Interiors | Exhibitions | Events
Freddy van Riemsdijkweg 21
5657EE Eindhoven
The Netherlands
+31 40 235 36 37

info@gielissen.nl
www.gielissen.com



Our steps To success

Concept & Design
Our team translates your briefing into a smart, creative stand concept that tells your story.

Proposal
You receive a complete offer; including visuals, specs, and planning.

Go!
You approve, we're ready to build. From here, it's full speed ahead.

1 Creative Brief
We start by listening. Together, we define your goals, wishes, budget, and timeline.

2

3 Calculation
We provide a detailed cost estimate that aligns with your design and budget.

4

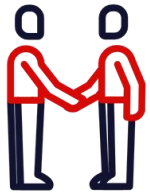
5 Feedback
We fine-tune the proposal based on your input, making sure everything feels just right.

6

7 Realization
We bring your stand to life; delivered on time, on point, and impossible to ignore.



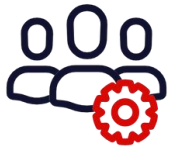
Together towards a **sustainable future**



We create **meeting environments**



through the use of **sustainable solutions**



and smart **engineering**



with **human well-being** as the primary focus



ustainable Development Goals

You can't solve the issue of sustainability on your own. That is why we have embraced the UN's SDGs. Five **chosen focus areas** (see left) form the base of our policy. We evaluate this annually. In this way, sustainability plays an integral part in our strategic decisions and thus our daily **operations**.



Stand detail
Spotlight arch





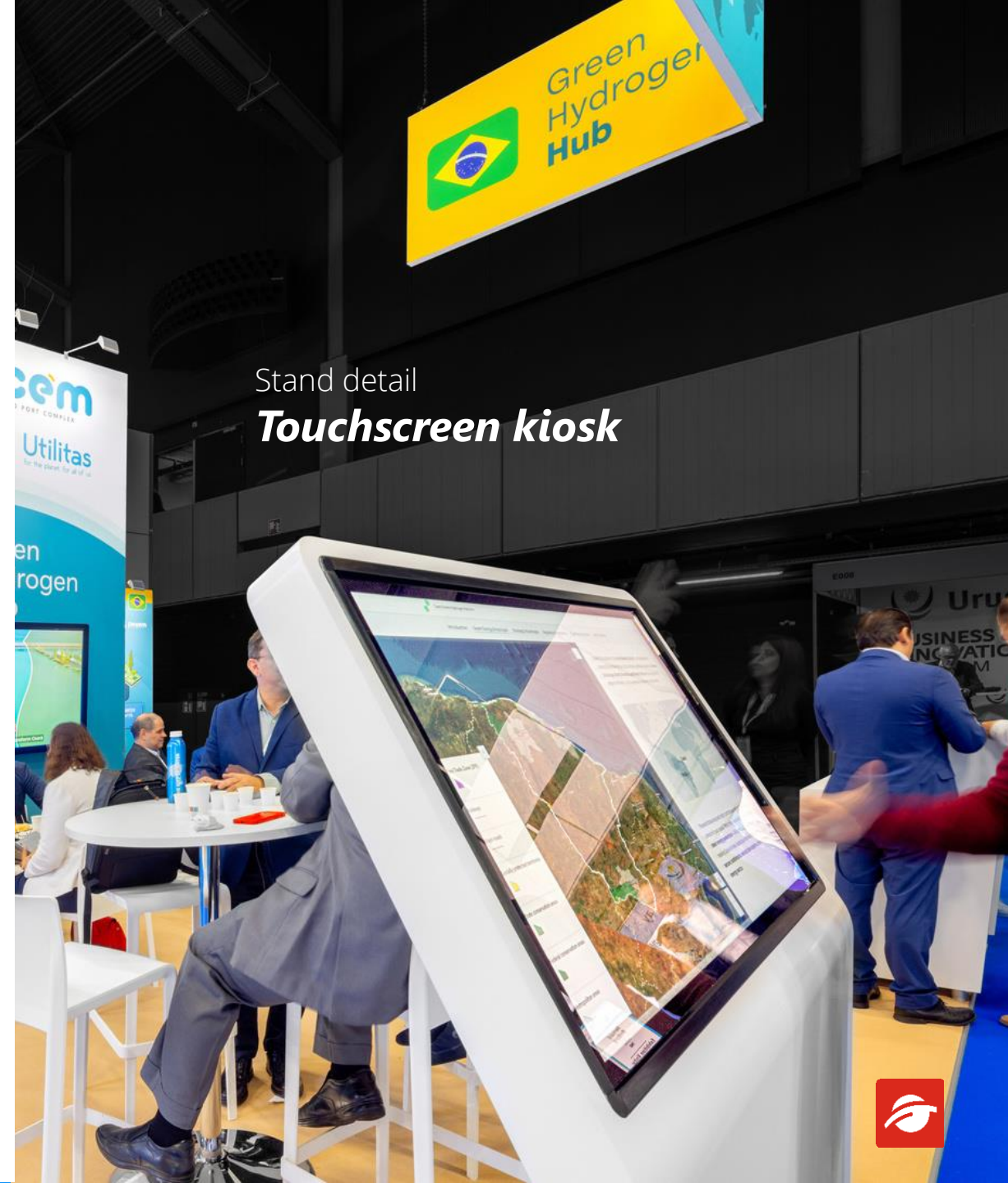






Stand detail
Curved banner





Stand detail
Touchscreen kiosk



Stand detail
Lightbox walls

Streamlining green hydrogen development

Pre-FEED

Thinking ahead, we use our EPC to guide safe, reliable, and robust concept design to FEED stage.

FEED

Learning from our construction and commissioning projects, we produce detailed technical risk, improve cost certainty, and inform investment decisions.

EPC

Combining world-class procurement capabilities and models, we optimise project delivery.



Your project way







Stand detail
Large LED screen





Hydrogen
Infrastructure



1 Filling Center

2 Tube Trailers

3 H₂ Refuelling Stations



tube
trailers



High Capacity
H₂ Refuelling
Station



CALVERA
Hydrogen





Montrose
PORT AUTHORITY

CHARTING THE
UNCHARTED

WWW.MONTROSEPORT.CO.UK



WE CAN HANDLE IT!
OPERATING FROM MONTROSE
FOR 30 YEARS

- A fully integrated logistics solution:
- Crane & Plant Hire
 - Cargo Handling & Labour Provision
 - Storage & Warehousing
 - Specialist Lifting Projects
 - Bulk Handling Specialists - modern bulk grabs up to 9m³ (9 cubic metres) for seamless operations.



2024
BUSINESS
OF THE YEAR
2024

AWARD WINNING



2024
UK SME
PORT OF THE
YEAR 2024

AWARD WINNING



1D02



MONTROSE
PORT'S
STRATEGIC
EXPANSION

- 280,000m² of Warehousing
- Stevedoring
- Freight Forwarding
- Crane & Forklift Hire
- Container Services
- Offshore Support Vessels
- Bulk Fuel

45 ACRES OF ADDITIONAL
INDUSTRIAL SPACE FOR
DEVELOPMENT

104 ACRES
NEARLY DOUBLING
OUR FOOTPRINT



YOUR TRUSTED
SHIPPING PARTNER
PART OF MONTROSE
FOR 60 YEARS



CLARKSONS

clarksons.com







STACK AEM

Our AEM stack frames are optimized for mechanical stability, dimensional accuracy and chemical compatibility. They provide a perfect housing of membranes and electrode components, facilitating assembly and maintenance. They are developed to support the innovation and scalability of AEM-based solutions.

NTS HYDROGEN

ntsmoulding.com



SEEKING INNOVATION

ntsmoulding.com

POWERING THE FUTURE OF HYDROGEN

Scan this QR code with your device and hold it up to the trackers on the table



STEP INTO OUR AUGMENTED REALITY



D120 HEBEI SHIYU...





Stand detail
Big banner









TOILETTEN



High-Pressure Hydrogen



MITSUBISHI E&S

Stand detail
Island booth





Bulk Liquid Handle with NEOFLEX



The First
ISO 22000 Certified
**Flexitank
Manufacturer
Operator**



Multi-layer design for transporting
food-grade and non-dangerous liquids.



Bulkhead System

3" Bulk Valve

Neoflex H
Specialty handling the
specialized cargo
before unloading.



1J10



Neoflex



Neoflex

neoflex@neoflex.com.tr

@neoflextr

Bulk Liquid Handle with NEOFLEX







SINCE 1949

PAK SHAHEEN GROUP



ASIA - BALTICA
ASIA - FAR EAST

PAKISTAN Gateway to Central Asia



AGENCIES



JOINT VENTURES



OUR GROUP



SHIP AGENCY
PORTS AND TERMINALS
FEEDER OPERATOR
OCEAN FREIGHT, NVOCC
PROJECT LOGISTICS
EMPTY CONTAINER PARKS
CHARTERING & BROKERAGE
AIR CARGO / TRANSPORTATION
CONTAINER LEASING



PAK SHAHEEN GROUP
(Since 1949)



info@pakshaheen.com.pk
www.pakshaheen.com.pk



Magdenli

MASSIVE PROJECTS
NEED

MASSIVE EXPERIENCE

Turkey's leading turnkey solution provider
since 1985

AHOLA
SPECIAL

AHOLA
SPECIAL



Get in touch

Contact

sales@magdenli.com.tr

Website

www.magdenli.com.tr



Stand detail
LED banner



Stand detail
4-meter-high walls

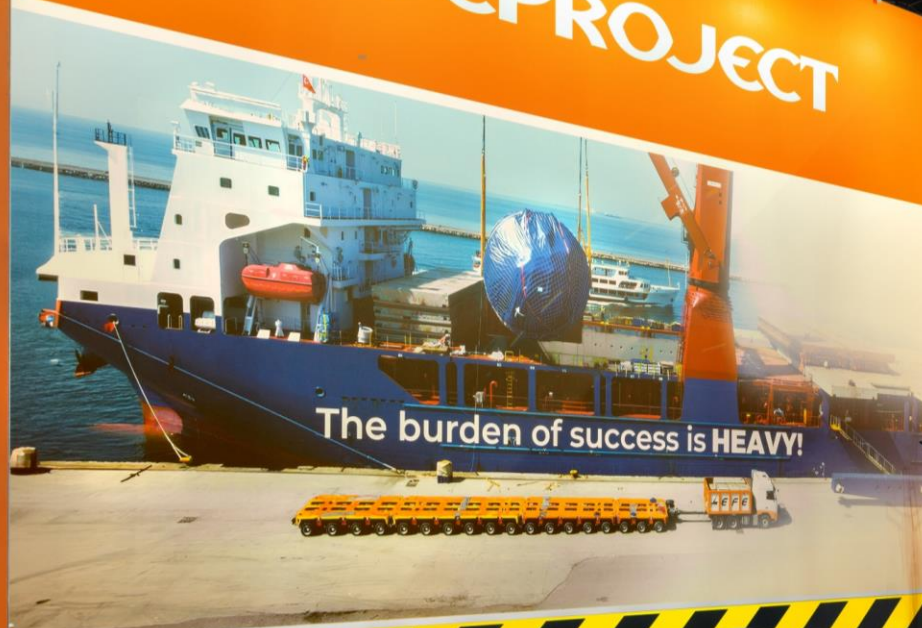




EFEPROJECT

www.efelogisticsgroup.com

- ▶ Efe Logistics Group Media
- in Efe Project / Efe Logistics Group
- @ Efeproject / EfeLogisticsgroup



The burden of success is **HEAVY!**

EFELOGISTICS **EFE BUTAS** EFLOGICA



2G74

EFEPROJECT

EFELOGISTICS **EFE BUTAS** EFLOGICA





BLUE WATER SHIPPING

HACKLIN 

Helsinki • Hamina • Kotka • Shanghai • Hong Kong
www.hacklin.fi



BLUE WATER SHIPPING

Together we create solutions



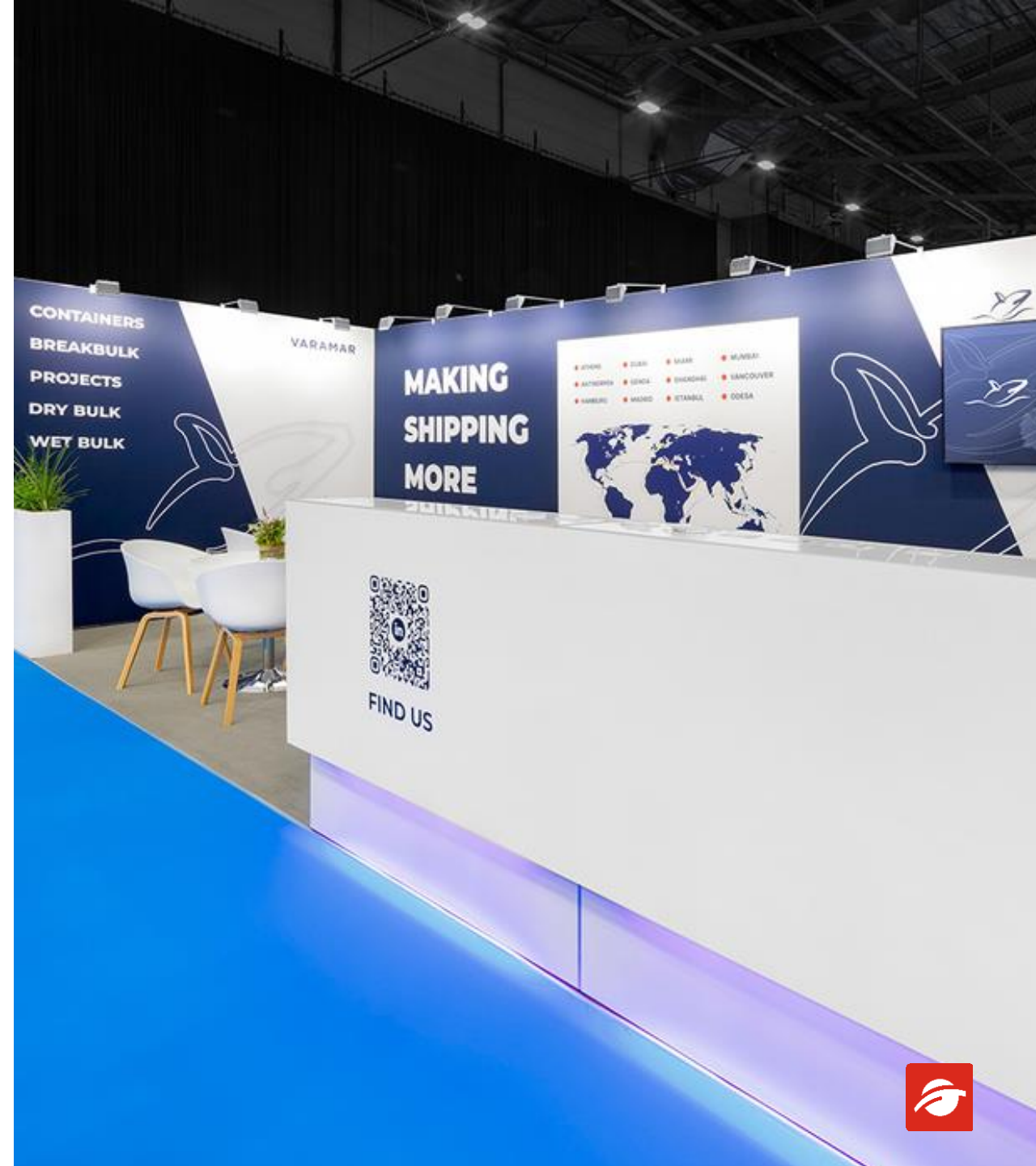
HACKLIN 



Stand detail

Truss construction

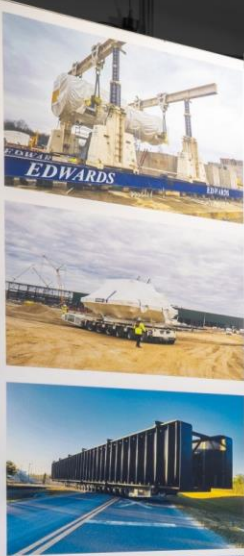






Stand detail
Banner wall





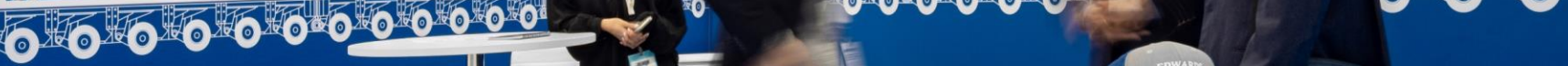
EDWARDS

MOVING & RIGGING
Since 1961



EDWARDS

MOVING & RIGGING
Since 1961



- HEAVY RIGGING
- STRAND JACKS
- JACK-N-SLIDE
- SKIDDING



KLN

PROJECT

KLN PROJECT

KLN PROJECT



THE NEXT GENERATION
HAS BEEN BUILT FOR THE 21ST CENTURY
Safe and sustainable
shipping. For sure.



Trak
TRANSPORTACIONES
Heavy Haul
Transportation
within Mexico, USA and Canada



Flatbeds



Oversize



Wind Power



Trak
TRANSPORTACIONES
Heavy Haul
Transportation
within Mexico, USA and Canada



1B02

Trak
TRANSPORTACIONES



zeevonk | Powered by Vattenfall & Copenhagen Infrastructure Partners

Zeevonk combines offshore wind with onshore green hydrogen production.

Green hydrogen will be produced using renewable energy from wind farm Zeevonk.

The electrolyser, up to 1 GW, will be located in the port of Rotterdam.



VATTENFALL 



VATTENFALL



Stand detail
National pavilion



GATMA
المجمع الجزائري للنقل البحري
Groupe Algérien de Transport Maritime

GATMA ALGERIA GROUP OF MARITIME
CNAM ISA

GATMA
ISA

GATMA
ALGERIA GROUP OF MARITIME
CNAM EL DJAZAIR

GATMA



Freddy van Riemsdijkweg 21
5657 EE Eindhoven
Nederland
+31 40 235 36 37
info@gielissen.nl
www.gielissen.com

Building unforgettable stories

© Gielissen Interiors | Exhibitions | Events

All rights reserved. No part of this publication may be reproduced or transmitted in any form or by means, electronic or mechanical, including photocopy, recording, or any information storage and retrieval system, without permission in writing from the publisher. The images in this presentation are a visual representation of the concept and indicational only. They can not be regarded as a strict reference to reality and therefore, reclamations in this matter can not be accepted.